

Specs	MagSquare 165	MagSquare 400	MagSquare 600	MagSquare 1000
Part #	8100494	8100238	8100106	8100099
Hold (lbs/kg) on thick steel	150/68	400/181	600/272	1000/454
H= (in/mm)	2.6/65	3.5/90	4.2/106	5.7/147
W= (in/mm)	1.2/31	1.6/41	2/52	2.8/72
D= (in/mm)	1.9/48	2.5/64	2.9/75	4.2/108
Wt=(lbs/kg)	0.5/0.2	2/0.9	3/1.4	7.4/3.4



Also available in High Heat; MagSquare165 (8100610), MagSquare400 (8100625) & MagSquare 600 (8100624)

MagSquares – workholding and fixturing.
The most versatile workholding tool ever.
A must have tool for every welding professional.

Welders and fabricators are raving about the versatility, convenience and efficiency of Magswitch MagSquares—extremely powerful on/off magnetic blocks with strong holding force available on all sides. Welders can now enjoy complete control over incredibly strong magnets (1,000 lbs (454 kg) on the MagSquare1000), which feature multi-plane workholding capability in a design that can be positioned easily and precisely. A 180-degree knob twist is the only action required to turn MagSquares on and off, making them superior to manual clamping in these areas and others. Once you've had a chance to experience the benefits of this technology firsthand, you'll want the entire line.

Enjoy these innovative MagSquare features:

- Incredible strength
- Fast, precise positioning
- Mounts anywhere – no limitations like clamps
- Magnetic grip on five sides
- Mounts to flat and pipe
- Pre-tapped holes on all sides for mounting
- Great for making your own fixtures
- Can work in multiples to destack sheets

MagSquares are also the ultimate fixturing tool. Incredibly flexible with mounting capabilities on four sides. Just a simple 180 degree turn of the knob and you are set up. Use stand alone, or mount fixturing aides to sides. Great for supporting guides and walls. Magnetic hold on five sides. Use non-ferrous materials in fixture attachments.



Scan link or go to <http://youtu.be/FsvUMzH56t4>



High Heat tools recognizable by their gold housing



Align two pieces of steel – flat or round.



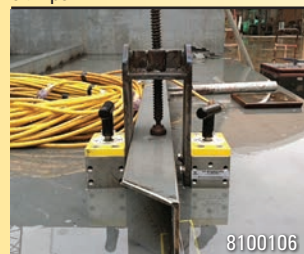
Helping hand – a temporary support to hold a part or tool on a vertical wall.



Use as a guide anywhere on a steel table. No limitations like clamps.



Fabricate angles quickly; pull corners together with hold on multiple sides.



Great for making your own fixtures.



Secure steel for fabricating or cutting.



When you set up and position steel for a weld, it should be easy and fast. Positioning mechanical clamps or getting a helping hand is time consuming and adds to the number of hands on the material. Magswitch is fast on, turns off, saves time and burrs in your fingers.

*For more examples of fixturing with Magswitch visit our website at www.magswitch.com.au.