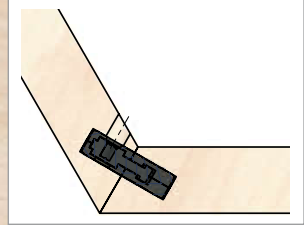
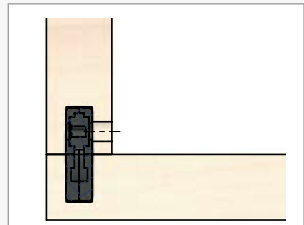
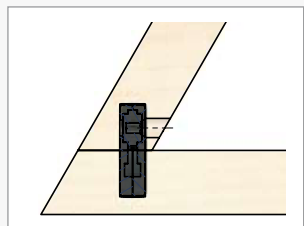




Clamex S

Biscuit-shaped connector

For aesthetic constructions -
Demountable, flexible and easy



Clamex - The biscuit-shaped connector

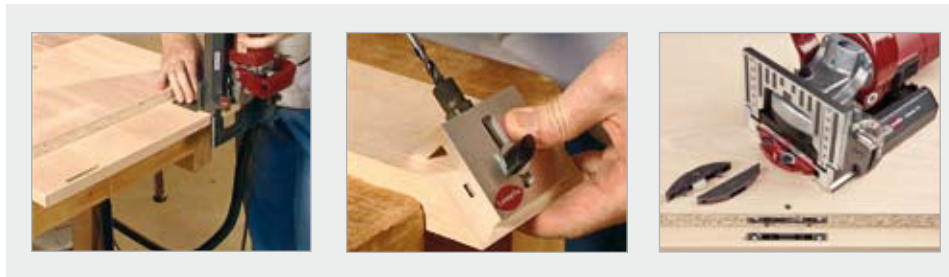


Clamex S-18
with metal lever



Applications of Clamex

- Demountable furniture connections
- Surface, corner and middle wall joints
- Joints in any angle
- Frame constructions
- Room dividing elements
- Connections to already installed objects and to walls



Clamex - all advantages at a glimpse

Detachable connections

Aligns and connects,
2 functions in one fitting

Maximum aesthetics due to mini-
male hole size for opening and
closing of the connection

No torsional movement due to
aligning pins

Various **angle connections** possible

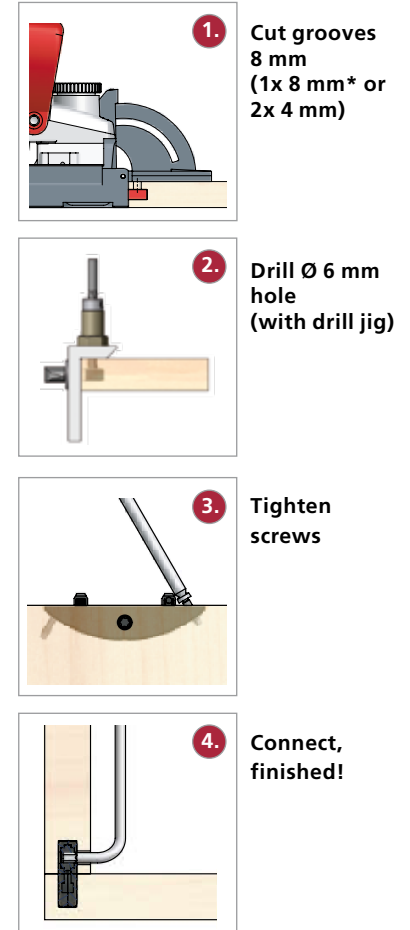
Stackable, since no parts protruding
in the surface

Useable in solid wood and wood
composites

Easy installation with any Lamello
biscuit joiner

Low investment

How it works:



Clamex

Material: Fibre-glass reinforced plastic
Size: 66 x 29 x 8 mm
Tolerance: laterally +/- 1.0 mm (max. +/- 1.25 mm)



Clamex S-18 small size pack

- 18 pairs Clamex
- 1 marking jig
- 1 torx key
- 75 screws RK 3 x 15 mm

- Clamex S-18, box:**
- of 80 pairs**
- of 300 pairs**
- of 1'000 pairs**

Art. No.
145231

145236
145241
145251

Accessories:

- HW-Reversing blades cutter** for 8 mm groove
Ø 100 x 22 x 8 mm
- Drill jig** for angles 35° - 90° incl. drill
- Drill** Ø 6 mm
- Clamex installation set**
- Drill jig for angles 35° - 90° and HW-Reversing
blades cutter
- Covercaps** available in 5 colours
- white (0), black (1), pine (2), beech (3), brown (4)

Art. No.
132108

125240
131506
125250

33528X



Swiss made

Manufacturer:
Lamello AG
Joining Technology
Hauptstrasse 149
CH-4416 Bubendorf
Switzerland
Tel. +41 (0)61 935 36 36
Fax +41 (0)61 935 36 06
info@lamello.com
www.lamello.com