



FastCap®



Deflector™ inventor,
Matt Stodola

2010-2011
American
Innovations



RocLoc™ inventor,
John Fitzsimmons



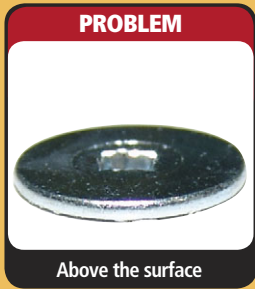
Deck Master™ inventor,
Jason Lindquist

dbc

designed by a
cabinetmaker / contractor



MICRO FLUSHMOUNT DRILLBIT SYSTEM with Carbide Bit.



Above the surface



Flush with the surface

- Unique ball bearing stop collar that controls the recess depth of the drill
- Stop collar stops the bit from spinning when it comes in contact with the surface
- Won't mar the surface!
- Drills a perfect hole and pilot hole
- Both pilot bit and countersink bit are totally adjustable
- Great for countersinking wood veneer caps and PowerHead Screws

The 3/8" and 18mm Drill bits are only the inner countersink portion. A Micro FlushMount Drill Bit is required for use.

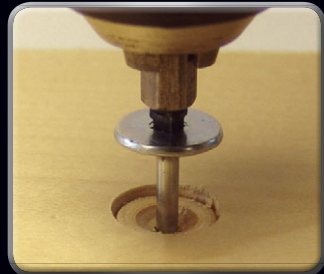


We recommend making the cover caps with the Custom Color Hole PunchSM to ensure a perfect fit. Includes two extra pilot bits with every drill.

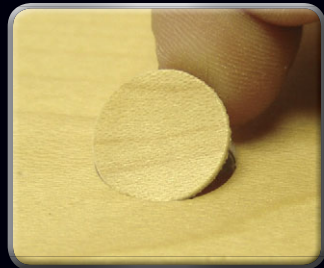
Description	Part Number	USD
FlushMount DrillBit (3/8")	FC.DB.3/8	\$18.00
FlushMount DrillBit (9/16")	FC.DB.9/16.MICRO	\$50.00
FlushMount DrillBit (18mm)	FC.DB.18MM	\$20.00
Inner Bit Replacement	FC.DB.MC.INNERBIT	\$5.00



Drill a hole



Countersink screw



Cover with a Fastcap

The Layout Tape



How do you get your measurements right?



Tape it on and drill!

Have you ever had a small job where you needed the line bore panel for adjustable shelves or hinge plates? The new **Layout Tape** from FastCap is fast, easy, and accurate. It comes with 32mm spacing for drilling 5mm shelf pin holes and has a 37mm offset from both edges. Simply line the tape up and start drilling. Another innovative product "designed by a cabinetmaker."

Inventor,
Art Liebeskind



Description	Part Number	USD
Layout Tape 60' roll	LAYOUTTAPE	\$14.99

Layout Drill Bit™ (5mm drill stop)



Patent Pending



The **Layout Drill Bit** has an integrated ball bearing stop, which allows you to drill precise, chip free, 5mm holes at the correct depth every time leaving no surface marks. The ball bearing stop spins freely while providing precise depth adjustment. To adjust the depth, simply loosen and tighten with an allen wrench. This allows movement of ball bearing stop up and down the shank of the drill. Designed to work in combination with our **Layout Tape** for 32 mm European style adjustable shelving. Also available as a system which includes the **Layout Drill Bit** and the **Layout Tape**.

Description	Part Number	USD
Layout Drill Bit	LAYOUT DRILL BIT	\$15.00
Layout System	LAYOUT SYSTEM	\$25.00

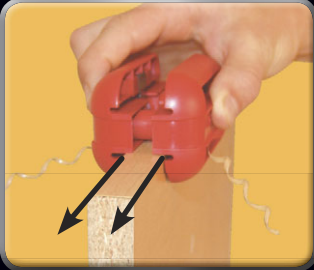


With wood, trim with the grain



When trimming solid wood, take trimmer apart and trim one edge at a time, with the grain to avoid tear out.

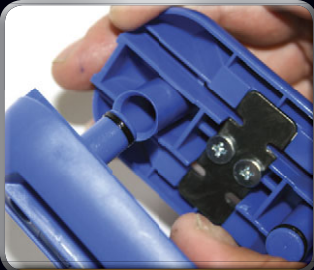
Trimming one edge at a time



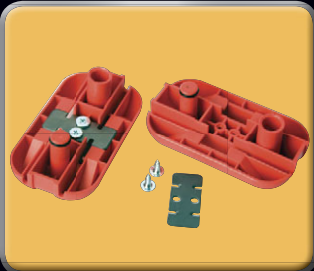
Trim both edges (PVC only)



No springs to lose!



Close up pneumatic action



Easy to change blades



High Carbon Steel



Tungsten Carbide

PROBLEM



Chisel one side at a time

FASTCAP'S SOLUTION



Trim both sides at once!

GREAT FEATURES!

- No springs to lose
- Super smooth action
- Replacement blades available
- Comfortable, ergonomic design
- Lasts twice as long as a conventional trimmer
- Trims both directions, both sides, top and bottom
- **NEW** carbide blades last 10x longer than steel blades!



QUAD TRIMMER



QUAD TRIMMER PRO

The last trimmer you will ever buy!



Description	Part Number	USD
Quad Trimmer w/ Carbon Steel Blades	Q.TRIM	\$19.95
Quad Pro Trimmer w/ Tungsten Carbide Blades	QPRO.TRIM	\$39.95
Carbon Steel Blade Replacements	Q.BLADE	\$10.00
Tungsten Carbide Blade Replacements	QPRO.BLADE	\$26.00

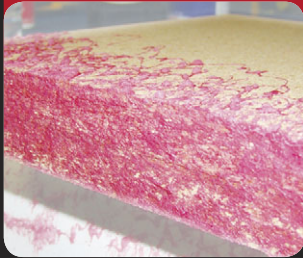


SpeedTape™

**ULTRA
ACRYLIC
BOND**

Contact cement on a roll!
"Ultra Bond™" transfer adhesive.

PROBLEM



Contact cement overspray

FASTCAP'S SOLUTION



No mess, no stress!

SpeedTape™ features:

- Same great adhesive you came to appreciate with **Fastcaps™** and **Fastedge™**
- Made with high performance acrylic "Ultra Bond™" double-sided PSA adhesive
- Increases in strength as it cures, providing a long lasting permanent bond
- Totally waterproof and is rated from -30° to 250°
- Available in 1", 1.5", 2" and 6.5" wide by 50' rolls
(*custom widths also available up to 54" wide*)

As always, do a test to ensure the application is suitable for your project. Finishing veneers with **SpeedTape™** is critical. Always follow finishing instructions precisely.



6.5"

Great For...

- Edgebanding
- Veneer
- Laminate
- Applying carpet
- Jigs and fixtures
- General adhesives
- Peel and stick moldings



2"



1.5"



Laminates and veneers



Apply SpeedTape



Roll for maximum adhesion



Trim excess material



Remove liner, apply edgebanding

- SpeedRollerPRO (pg. 14)
- Flush Cut Trimmer (pg. 28)
- Quad PRO Trimmer (pg. 12)

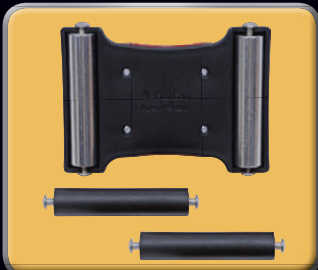


Recommended accessories

Description	Part Number	USD
SpeedTape 1" x 50'	STAPE.1X50	\$10.00
SpeedTape 1.5" x 50'	STAPE.1.5X50	\$15.00
SpeedTape 2" x 50'	STAPE.2X50	\$20.00
SpeedTape 6.5" x 50'	STAPE.6.5X50	\$60.00

Made with pride in the
USA
a TPS Company

Fastedge
Recommended
Accessory



Interchangeable metal & rubber wheels



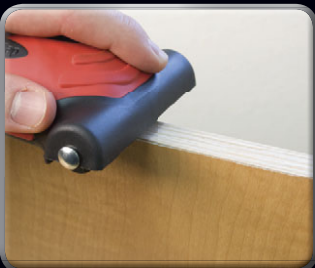
Use a flat head screwdriver to remove wheels - easy and fast!



Perfect for SpeedTape



Excellent for laminate



Great for veneer



Ideal for Fastedge

SpeedRoller^{PRO}™

LAMINATE ROLLER

PROBLEM



Clunky and awkward

FASTCAP'S SOLUTION



Ergonomic and easy

The **SpeedRollerPRO™** is an ergonomic laminate roller that can be used for any PSA application - especially **Fastedge™** & **SpeedTape™**. The **SpeedRollerPRO™** includes 2 sets of interchangeable wheels.



- Rubber wheels for non-marring applications



- Removable wheels for easy cleaning
- For any PSA or contact cement application



- Steel wheels for maximum PSI

The **SpeedRollerPRO™** comes with two metal and two rubber wheels for every possible situation. Steel wheels provide maximum psi, rubber wheels guarantee a non-marring job in applications with delicate materials.

Description	Part Number	USD
SpeedRollerPRO	SPEEDROLLERPRO	\$29.95



Load Capacity
150lb.



NEVER SHOWS UP LATE FOR WORK!

The **3rd Hand HD™** is the help you have been looking for. It is rugged, built to last a lifetime and it's never late for work! If you ever wished you had an extra hand... here it is! The **3rd Hand HD™** can brace, clamp, or provide support wherever and whenever you might need it.

Great for...

- Hanging cabinets
- Trim molding
- Crown molding
- Dust barriers
- Drywall
- Load stabilizer
- Light fixtures
- Laser mounting
- & much more!

UniversalFOOT

The **UniversalFOOT™** allows the **3rd Hand HD™** to free stand.

It is easily installed by removing the bottom articulating foot and then installing the **UniversalFOOT™**.

**Can be purchased separately*

***Dust Barrier Foot included with each 3rd Hand!**

Description	Part Number	USD
3rd Hand HD Support Pole	3-H HAND HD 5	\$39.00
3rd Hand HD - Twin Pack	3-H 2PK 3RD HAND 5'	\$69.99
UniversalFOOT 6" x 6"	3-H UNIVERSALFOOT	\$7.50
Dust Barrier Foot	3-H DBFOOT	\$3.75
The Door Mag (4 pc pk.)	3-H DOOR MAG	\$5.00
Magentic LaserMount	3-H MAG LASER MT	\$19.95
3rd Hand Carrying Bag with Pockets	3-H BAG	\$40.00



Easy-pump handle

Neoprene grip

Ball detents for positive locking every foot

5'-12' extension



Micro adjust

360° articulating top & bottom feet (includes two per 3rd Hand)



No Dust!

Creating dust barriers



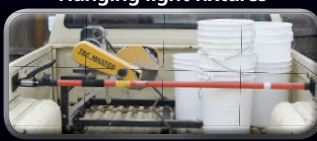
Great for crown molding



Installing cabinets



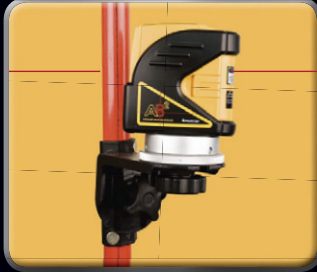
Hanging light fixtures



Load stabilizer



Drywall install with UniversalFOOT



Laser mounting



3rd HAND^{HD} *UpperHAND* HD™

PATENT PENDING

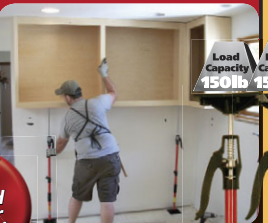
PROBLEM



SAVE OVER 20% On 3rd Hand Systems

2 pay checks

FASTCAP'S SOLUTION



GREAT FOR tub and shower surrounds too

1 pay check

Load Capacity 150lb. Load Capacity 150lb.

The **Upper Hand System™** is the latest version of our highly successful 3rd Hand™ product. We listened to our customers and the consensus was, make a middle hand specifically to install upper cabinets when the base cabinets are not in.

"Stop The Struggle™" Your back will love you!



Patent Pending

Includes:

- (2) Upper Hands™
- (4) 6"x6" UniversalFEET™
- (1) Custom hard side ballistic nylon carrying Bag



3rd HAND^{HD} Family

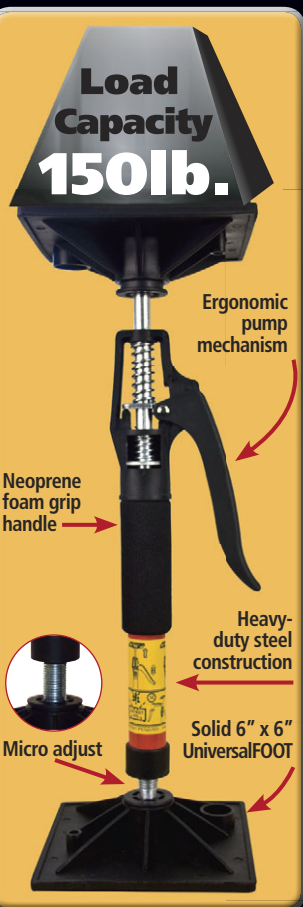
- Little Hand HD™
- Upper Hand HD™
- 3rd Hand HD™

NEW

Now all 3 sizes of the 3rd Hand™ have a hard-sided ballistic nylon bag complete with pockets! These bags will carry up to (4) 3rd Hand™, Upper Hands™ & Little Hands™ in their respective bags. All bags have custom pockets to store the **Universal Feet™** & other accessories.



Description	Part Number	USD
2 pc Little Hand HD System w/ case	3-H LITTLE 2PC SYSTEM	\$65.00
2 pc Upper Hand HD System w/ case	3-H UPPER 2PC SYS	\$76.00
2 pc 3rd Hand HD System w/ case & 4 Universal Feet	3-H 3RD 2PC SYS	\$115.00



3rd HAND^{HD} *LittleHAND* HD™

PATENT PENDING

PROBLEM



Struggle to install cabinets

FASTCAP'S SOLUTION



Little Hands to the rescue!

The **Little Hand HD™** is designed to support the upper cabinets after the base cabinets have been installed. This innovative product removes all the hassle of supporting upper cabinets during the installation. The **Little Hand HD™** comes stock with 2 large 6" x 6" **UniversalFEET™** that create a stable platform.



Little Hand System Includes:

- (2) Little Hands™
- (4) 6"x6" UniversalFEET™
- (1) Custom hard side ballistic nylon carrying Bag

16.5" to 22.8" extension

Description	Part Number	USD
Little Hand HD	3-H LITTLE	\$30.00
Little Hand HD 2PC System	3-H LITTLE HAND 2PC SYS	\$65.00
Little Hand Bag	3-H BAG LITTLE	\$20.00









EMT Kit

Mix and match to suit your needs!



EMT comes in 10' lengths and is sold at most hardware stores. By utilizing EMT, you can create a custom-sized **3rd Hand System** capable of reaching over 22'!

Kit includes...

- (1) 3-H Pump Jack Mechanism (150lb. load capacity)
- (1) Micro Adjust Adapter
- (2) Universal Feet – 6" x 6"
- (2) 3-H Feet – 3" x 3"
- (1) 3-H Magnetic Dust Barrier Foot
- (1) 24" Connector Pole (to connect two EMT sections together)

Used in conjunction with EMT (Electrical Metallic Tubing) the **3rd Hand EMT Kit™** allows you to reach heights of 22'. At extended lengths this system should only be used as a dust barrier system. (EMT and couplers not included with kit.)

Not recommended as a load-bearing device.

Patent Pending

Description	Part Number	USD
3rd Hand EMT Kit	3-H EMT KIT	\$35.00



3rd Hand EMT Kit
reaches 22'



3rd Hand Connector Kit
reaches 18'



3rd Hand
reaches 12'





Connector Kit

Great for...

- Creating a dust barrier in a large building or tall ceiling
- Use with our **Magnetic LaserMount™** when installing gas pipes and electrical fixtures

QUICKLY
go from 12' to 18'!

Easily go from 12' to 18' feet with (2) **3rd Hands***, (2) Universal Feet and the **NEW 3rd Hand Connector Kit™**.

The **3rd Hand Connector Kit™** was designed to enable the 3rd Hand System to create a dust barrier, or laser mount higher than 12'.

Not recommended as a load-bearing device.



Connector Kit

Patent Pending

Inner poles should not exceed 12" when using the Connector Kit

UniversalFOOT* **MUST** be used on the bottom 3rd Hand

*3rd Hands and UniversalFOOT sold separately.

Description	Part Number	USD
3rd Hand Connector Kit	3-H CONNECTOR KIT	\$24.99
3rd Hand HD - Twin Pack	3-H 2PK 3RD HAND 5'	\$69.99
UniversalFOOT 6" x 6"	3-H UNIVERSALFOOT	\$7.50



Contractor Pack Package Deal



PROBLEM

Stop The Struggle!



FASTCAP'S SOLUTION

Get a contractor pack!

Fit everything you need in one bag!

Contractor Pack Includes:

- (4) 3rd Hands
- (8) Articulating Feet 3x3
- (4) 3-H Magnetic Dust Barrier Feet
- (4) UniversalFEET
- (1) Ballistic nylon bag

\$226
Value!
**Only
\$176**
\$50 Savings!

Description	Part Number	USD
Contractor Pack	3-H CONTRACT PK	\$176.00

Load
Capacity
150lb.

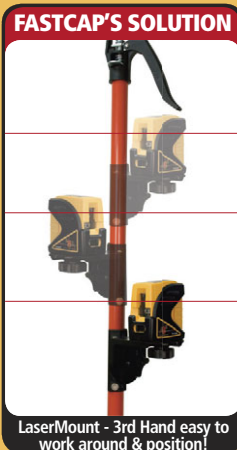
MAGNETIC LASERMOUNT™ for 3rd HAND PRO



PROBLEM

Tripods - difficult to work around and limited adjustability

Our **Magnetic LaserMount™** utilizes powerful neodymium magnets to securely attach your laser to the **3rd Hand™**... The laserline becomes the actual line you work from, eliminating the need for chalk lines. In seconds the **LaserMount™** can easily position any laser exactly where you want it. **"Stop The Struggle..."**. Save time and money!



FASTCAP'S SOLUTION

LaserMount - 3rd Hand easy to work around & position!

Description	Part Number	USD
Magnetic LaserMount	3-H MAG LASER MT	\$19.95

DoorMag™



PROBLEM

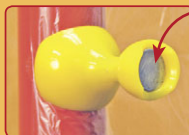
No more messing around with zip doors

The **Door Mag™** eliminates the need to buy expensive single use self-adhesive zippers. Our **Door Magnets™** easily create in and out access through any dust barrier wall. They utilize high performance neodymium magnets which keep plastic tight to poles and will last a lifetime.



FASTCAP'S SOLUTION

Set up your own dust barrier in seconds!



Dual **neodymium** high performance **magnets** work great on **large** and **small** poles.

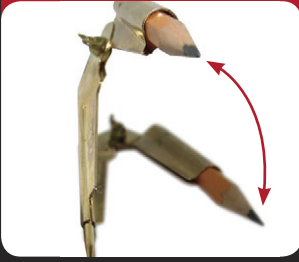
Description	Part Number	USD
The Door Mag (4 pack)	3-H DOOR MAG	\$5.00



AccuScribePRO™

SCRIBING TOOL

PROBLEM

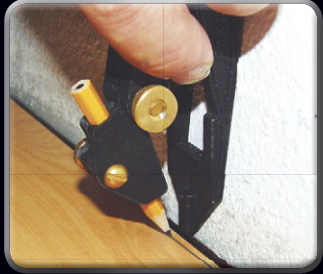


Easily rocks, inaccurate marking!

FASTCAP'S SOLUTION



Flat bottom, precision marking



Great for flooring



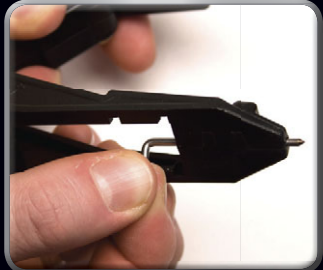
Great for siding



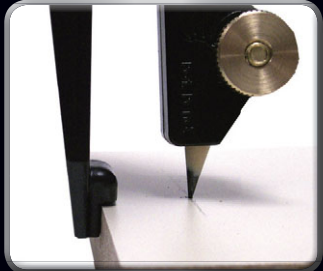
Precision pencil sharpener



Great for making a radius



Retractable pin



Great as marking gauge

The **AccuScribePRO™** makes it easy to maintain a consistent scribe offset, by staying parallel to the object's surface every time. It is ideal for scribing the trim on kitchen cabinets, architectural moldings, countertops, splash guards, tile and even flooring.



Great for...

- Cabinet trim
- Countertops
- Architectural moldings
- Splash guards
- Tile
- Flooring
- and more!

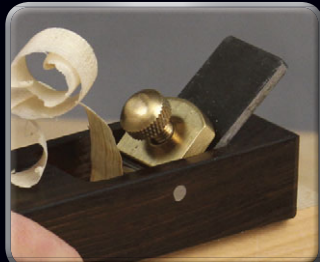
Inventor,
Ken Mullins

Description	Part Number	USD
AccuScribePRO	ACCUSCRIBE PRO	\$18.00

Patent Pending



Pull stroke offers complete control



Ebony wood with brass and steel hardware



Signed and numbered



Simple blade adjustment lever



Creates a perfect 1/16" radius edge



For the love of fine woodworking

Artisan Pull Plane™ **NEW**

The new **Artisan Pull Plane™** is the Artisan woodworkers first choice. The pull stroke offers superior control when planing your wood projects. Known as Kanna in Japanese, this tool stands center stage in the world of Japanese carpentry.



The fully adjustable blade allows for varying depth and is fully removable for cleaning and sharpening.

Patent Pending

Description	Part Number	USD
Artisan Pull Plane	PLANE-PULL	\$25.00

Artisan Desk Plane™

E-mails got you down? Endless bids to quote? Every woodworker knows that making chips in the shop can be the best therapy. Now the shop is on your desk, so let the chips fly! It comes with a beautiful matching ebony work bench and a replaceable beech beam. Each **Artisan Desk Plane™** is numbered and signed by Paul Akers, making it a limited edition collector's piece. As one cabinetmaker said, "It's this or medication!"

Patent Pending



Description	Part Number	USD
Artisan Desk Plane (Ebony Desk bench, Euro plane & 2 boards)	PLANE DESK SET	\$49.98

1/16" Artisan Radius Plane™

For the Love of Wood

The 1/16" **Radius Plane™** from FastCap® is a work of art. It is handcrafted and made with solid ebony, brass and precision machined steel. To hold it in your hand is to know why you love woodworking. This plane is excellent for relieving sharp edges on hard and soft woods.

Patent Pending



Description	Part Number	USD
Artisan 1/16" Radius Plane	PLANE-RADIUS	\$25.00